

AGENTSCHAP  
INNOVEREN &  
ONDERNEMEN

This program is possible  
thanks to the financial  
support of Vlaio



This program is  
co-financed by  
Connect for Europe  
Facility (CEF)



# Mobilidata

Safer, smarter and more sustainable through traffic, thanks to you!

High level EU cycling conference 30/01/'24  
Erika Decorte

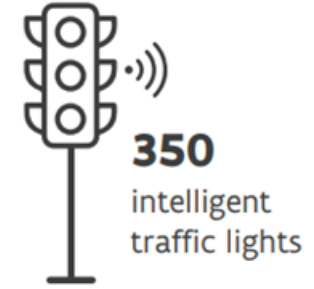
**MobiliData**



This program is co-financed by Connecting Europe Facility (CEF)



2019-2024



## GOALS

safer traffic

smoother traffic

lower emissions

Partners:



AGENTSCHAP  
WEGEN & VERKEER

DEPARTEMENT  
MOBILITEIT &  
OPENBARE WERKEN

DEPARTEMENT  
ECONOMIE,  
WETENSCHAP &  
INNOVATIE

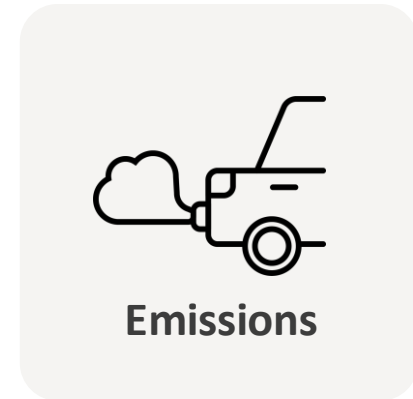
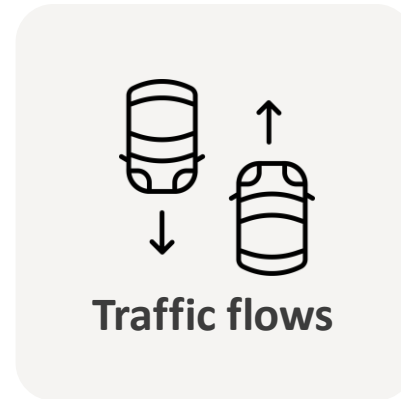
AGENTSCHAP  
INNOVEREN &  
ONDERNEMEN

# Mission Statement

Mobilidata



Realise a positive contribution in Flanders in relation to



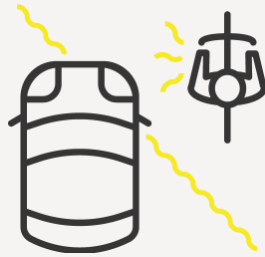
By implementing a sustainable digital **data-  
infrastructure** and the stimulation of the use thereof  
within **innovative applications**

# Innovative solutions

4 domains



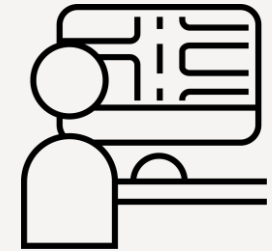
Roll-out of C-ITS applications with intelligent traffic light control systems



Roll-out other C-ITS applications



R&D next-gen smart mobility applications



Public policy supporting applications

## iTLC



- ITS application
- RIS
- TLC

## MOBILIDATA INTERCHANGE



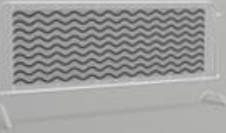
- Traffic Light Exchange

## CONNECTING PARTIES



- Back-end
- Front-end
- Private data

## PUBLIC DATA



- Road signs
- Parking
- Incidents
- Weather forecasts
- Road Works

## ROAD USERS



- Pedestrians
- Cyclists
- Passenger cars
- Public transport
- Emergency services

# Overview: Mobilidata use cases

01

- Static & dynamic speed limits
- Static road signs
- Static road signs – active road user

02

- Priority vehicle warning
- Priority vehicle warning – active road user
- Slow-moving vehicle warning
- Accident/vehicle breakdown warning
- Slow-moving service vehicle warning
- Slow emergency/safeguarding vehicle warning
- Slippery roads warning
- Person/animal on the road warning
- Spilled load warning
- Traffic jam ahead warning
- Road works warning
- Road works warning – active road user
- Wrong way driving warning

03

- iTLC Time-to-green information and speed advice
- iTLC Time-to-green information advice – active road user
- iTLC Priority emergency vehicle
- iTLC Prioritising public transport
- iTLC Prioritising vehicle convoy
- iTLC Prioritising convoy – active road user
- iTLC Prioritising truck
- iTLC Prioritising in adverse weather conditions – active road user
- iTLC Traffic signal optimisation
- iTLC Traffic signal optimisation – active road user

04

- Recommend routing
- Truck parking information
- Park & Ride facility information

05

- Road safety monitor
- Smart mobility and environment indicator

Mobilidata

Mobilidata

cases

# Use case structure: active road user

01

- Static & dynamic speed limits
- Static road signs
- Static road signs – active road user

02

- Priority vehicle warning
- Priority vehicle warning – active road user
- Slow-moving vehicle warning
- Accident/vehicle breakdown warning
- Slow-moving service vehicle warning
- Slow emergency/safeguarding vehicle warning
- Slippery roads warning
- Person/animal on the road warning
- Spilled load warning
- Traffic jam ahead warning
- Road works warning
- Road works warning – active road user
- Wrong way driving warning

03

- iTLC Time-to-green information and speed advice
- iTLC Time-to-green information advice – active road user
- iTLC Priority emergency vehicle
- iTLC Prioritising public transport
- iTLC Prioritising vehicle convoy
- iTLC Prioritising convoy – active road user
- iTLC Prioritising truck
- iTLC Prioritising in adverse weather conditions – active road user
- iTLC Traffic signal optimisation
- iTLC Traffic signal optimisation – active road user

04

- Recommend routing
- Truck parking information
- Park & Ride facility information

05

- Road safety monitor
- Smart mobility and environment indicator

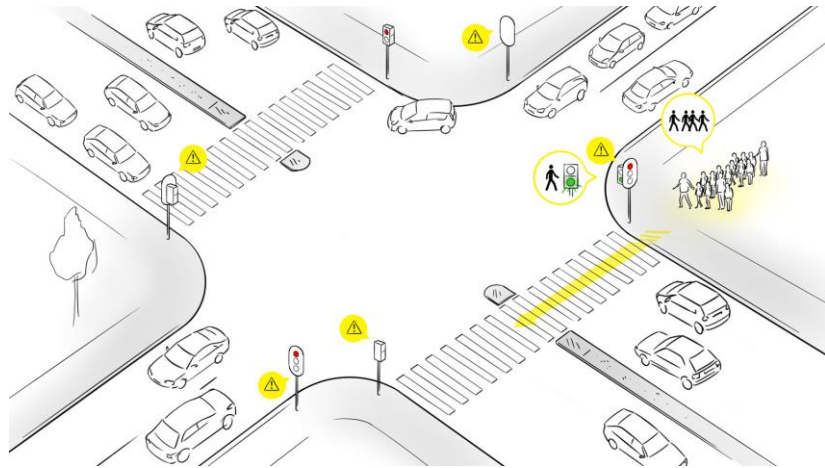
MobiliData

MobiliData

cases

# Active road users and connected traffic lights

cTLC prioritising convoy



cTLC prioritising in adverse weather conditions



cTLC traffic signal optimization





# Main needs

- Data is scattered and not accessible
- Data isn't gathered in consistent way -> lack of standardisation
- Data is not representative
- Data is of poor quality
- Duplication of efforts
- Privacy concerns
- Lack of more cyclist detection systems
- Who is and isn't cycling?

AGENTSCHAP  
INNOVEREN &  
ONDERNEMEN

This program is possible  
thanks to the financial  
support of Vlaio



This program is  
co-financed by  
Connect for open  
Facility (CEF)



**Want to know more?**

**[www.mobilidata.be/en](http://www.mobilidata.be/en)**

**[mobilidata@imec.be](mailto:mobilidata@imec.be)**

**MobiliData**