

EONE HOUSE

A design isn't finished until everyone can use it.

THE HOUSE FOR EVERONE

When you enter the building, LED lights brighten your path through the darkness without the need of switching them on. (A) The entrance door opens automatically with a chip once you come closer. This way, everyone can enter equally and independently, even while caring heavy shopping bags or a pram. Almost all the doors in the house are sliding doors (laundry room has double side open doors)

Once inside, you can intuitively find your way around: on the left, there is the living area and on the right, you'll find more quiet sleeping area. A seamless transition is achieved by floor to ceiling window walls that create strategic openings for landscape and natural daylight. Space is reduced to its essence, simplicity creates perspectives for Nature to catch your eye when it seeks calmness. Modules are highlighted by divisions made in the rooftop. The building seems to be cut by sunlight.

JACUZZI

The design of the outdoor jacuzzi enables you to enter the water the way you like: Next to the steps, there is a slope for you to use as well. (C) The water slows down the sliding in down slightly. This slope is not only essential for people on a wheelchair, but it could also be a source of inspiration and fun for children. By integrating an oval form into a rectangular bathtub, the corners can serve for sitting comfortably in the water. (B)

BEDROOM

When you go to sleep, your bed can be moved automatically to suitable position. (G) The specially designed handles can help you to get extra support when needed. (E, G) Additionally, the lamps next to the bed can serve as support as well. (F) They are mounted on a movable rail, so they don't have to hang overhead all the time. The table has a glowing surface that can be turned on easily and intuitively. (E) Behind the bed, an acoustic wall absorbs all surrounding noises so that you can enter the dreamland with a smile... (D)

The bedroom is a quiet and cosy place where you can step away from daily activities, into your own dreams and thoughts. The design of a wall, composed out of rectangular, Corke extrusions, is not only beautiful, but it efficiently reduces the background noises as well (0.15 NRC that absorbs approx. 40% of sounds in the human voice frequency range). (D)

BATHROOM

When you enter the bathroom, you will not notice the supports that are integrated all over the space. They are multifunctional and fit the overall design. For example, the support next to the toilet is not only a handle but also a shelf and a toilet roll holder... (H, J)

Next to the bath two handles are present, which can also serve as a towel rail. One is placed on rails. It can be used to help you enter and exit the bath, but also as a shelf for a book or laptop. (I)

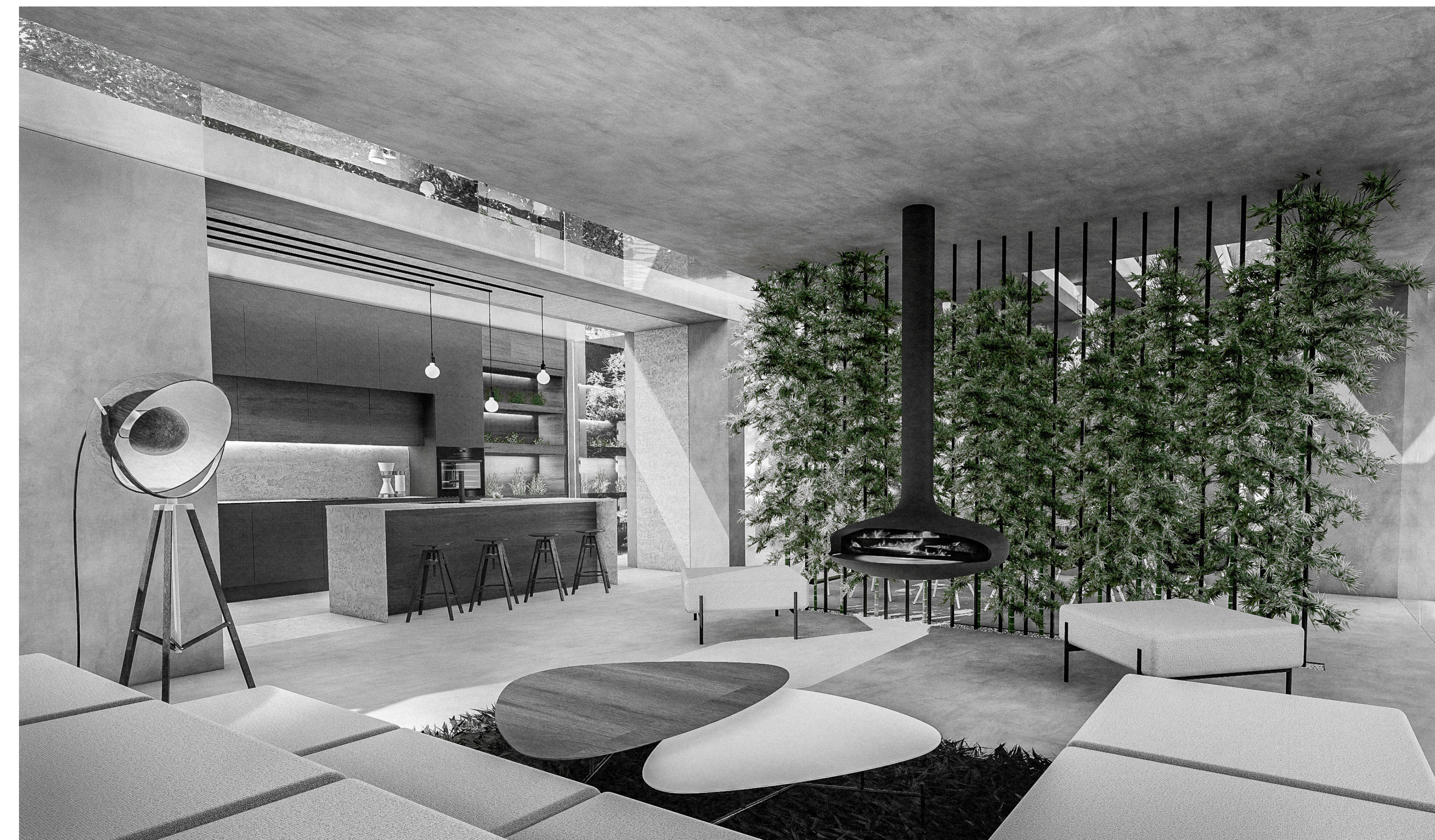
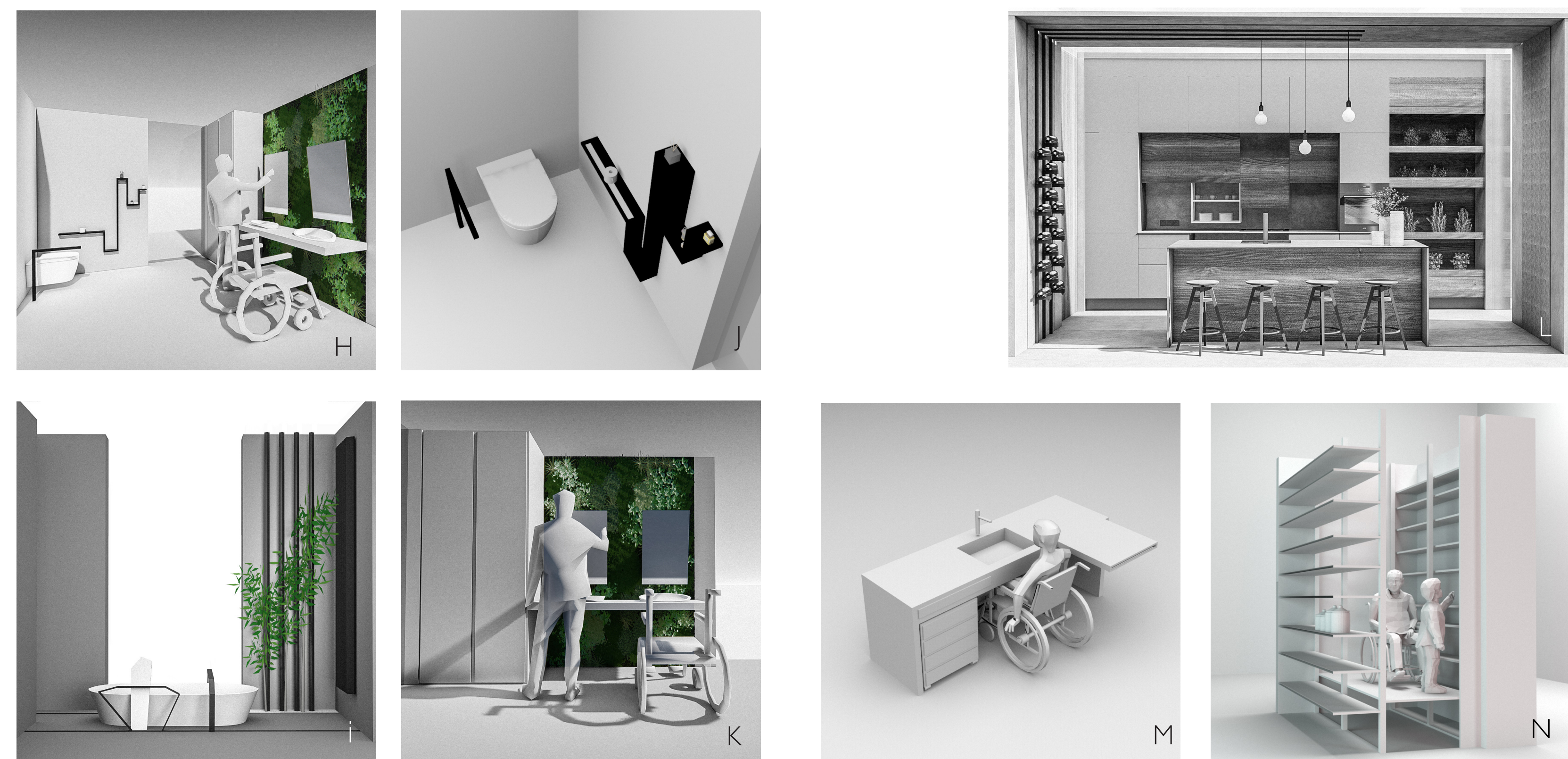
The tap next to the bath is located on the outside, which makes it easier to help people in need without having to worry about getting splashed.... Sinks and mirrors are movable which makes them usable from a sitting position, by anyone. (K)

KITCHEN

The kitchen includes designed cabinets with drop-down shelves which allows you to access even the ones higher located. (L, N) When you need something from the storage room, you can use an elevator, concealed in the pantry floor, so that you are able to reach all shelves also from a lower position. (M) This way, valuable storage space is optimized for and can be used by everyone...

KITCHEN ISLAND

The kitchen island is where wheelchair users can cook in an effortless and pleasant way. The island is equipped with a removable countertop, which gives more space for cooking and doesn't bother to move within the kitchen. It can be pulled out and adjusted to create a corner-shaped cooking space that enables one to stay in one place and use enlarged countertop. Moreover, we have designed a modular cabinet on wheels that can be moved freely so that it doesn't interrupt when cooking. (M)



QR CODE

When designing this house we did our best to step into the shoes of all. The design of the poster has to be it accessible and understandable for as many people as well. We provide a record of all the texts and description of the images on the poster.

Scan our personalised QR code and check out what's inside!

