

# Algemeen overzicht Gem of Prov

	2014	2015	2016	2017	2018	2019
<b>Exploitatie</b>						
<b>I. Exploitatie-uitgaven</b>	<b>8.925.526.038</b>	<b>8.945.695.290</b>	<b>9.095.673.032</b>	<b>9.234.208.172</b>	<b>9.396.588.173</b>	<b>9.551.906.395</b>
<b>I.A. Operationele uitgaven</b>	<b>8.602.038.906</b>	<b>8.610.965.857</b>	<b>8.748.242.251</b>	<b>8.877.025.686</b>	<b>9.035.230.736</b>	<b>9.195.778.082</b>
<b>I.A.1. Goederen en diensten</b>	<b>1.784.947.381</b>	<b>1.749.525.942</b>	<b>1.756.187.772</b>	<b>1.767.710.264</b>	<b>1.791.436.455</b>	<b>1.812.592.257</b>
Verbruikte goederen	67.190.737	63.652.011	64.781.902	65.061.772	64.934.754	64.791.612
Diensten en diverse levering	1.717.756.644	1.685.873.931	1.691.405.870	1.702.648.492	1.726.501.701	1.747.800.645
<b>I.A.2. Bezoldigingen, sociale lasten en pensioen</b>	<b>3.902.507.977</b>	<b>3.945.838.890</b>	<b>4.008.669.813</b>	<b>4.063.131.503</b>	<b>4.134.203.969</b>	<b>4.205.469.643</b>
I.A.2.a. Niet-onderwijzend personeel	2.968.827.876	2.995.112.918	3.039.637.084	3.081.871.635	3.132.566.023	3.179.765.869
Politiek personeel	128.110.889	128.375.009	130.764.504	133.204.167	135.667.064	136.963.066
Vastbenoemd personeel	1.561.077.684	1.598.462.553	1.619.548.526	1.639.119.437	1.663.824.821	1.685.667.320
Niet-vastbenoemd personeel	1.279.639.303	1.268.275.357	1.289.324.053	1.309.548.031	1.333.074.139	1.357.135.484
I.A.2.b. Onderwijzend personeel	661.514.453	673.655.123	686.958.374	692.909.605	706.512.421	720.265.141
I.A.2.c. Pensioenen	145.599.326	151.946.140	155.867.788	161.206.307	167.526.580	176.559.581
I.A.2.d. Overige personeelsuitgaven	126.566.321	125.124.709	126.206.568	127.143.955	127.598.945	128.879.052
<b>I.A.4. Toegestane werkingssubsidies</b>	<b>2.811.858.485</b>	<b>2.846.116.526</b>	<b>2.913.141.623</b>	<b>2.974.152.045</b>	<b>3.036.290.759</b>	<b>3.103.355.555</b>
I.A.4.a. Bijdrage aan de politiezone	891.906.582	930.407.623	961.940.370	988.234.412	1.015.759.436	1.046.029.371
I.A.4.b. Bijdrage aan het OCMW	862.435.441	880.297.474	901.201.842	918.841.860	935.987.949	958.014.031
I.A.4.c. Bijdrage aan de besturen van de erediens	45.047.003	53.112.710	53.397.459	53.794.789	53.990.710	53.917.070
I.A.4.d. Overige toegestane werkingssubsidies	1.012.469.458	982.298.719	996.601.952	1.013.280.984	1.030.552.664	1.045.395.082
<b>I.A.5. Andere operationele uitgaven</b>	<b>102.030.413</b>	<b>68.713.693</b>	<b>69.469.547</b>	<b>71.255.654</b>	<b>72.520.572</b>	<b>73.578.851</b>
<b>I.B. Financiële uitgaven</b>	<b>323.487.131</b>	<b>334.729.433</b>	<b>347.430.781</b>	<b>357.182.486</b>	<b>361.357.438</b>	<b>356.128.313</b>
<b>II. Exploitatie-ontvangsten</b>	<b>9.699.228.010</b>	<b>9.718.238.794</b>	<b>9.914.198.892</b>	<b>10.109.326.471</b>	<b>10.317.579.280</b>	<b>10.536.907.274</b>
<b>II.A. Operationele ontvangsten</b>	<b>9.283.692.501</b>	<b>9.327.558.764</b>	<b>9.528.032.184</b>	<b>9.725.153.473</b>	<b>9.933.343.079</b>	<b>10.154.345.317</b>
<b>II.A.1. Ontvangsten uit de werking</b>	<b>628.400.660</b>	<b>635.187.531</b>	<b>640.266.254</b>	<b>646.124.840</b>	<b>650.501.746</b>	<b>656.161.854</b>
<b>II.A.2. Fiscale ontvangsten en boetes</b>	<b>4.859.632.232</b>	<b>4.865.721.053</b>	<b>4.964.258.888</b>	<b>5.061.609.620</b>	<b>5.158.524.216</b>	<b>5.260.894.317</b>
II.A.2.a. Opcentiemen op de onroerende voorheffing	2.153.562.087	2.201.072.286	2.251.810.898	2.303.431.757	2.357.026.487	2.411.847.126
II.A.2.b. Aanvullende belasting op de personenbelasting	1.934.583.671	1.874.291.311	1.913.274.296	1.952.256.045	1.992.586.872	2.033.843.776
II.A.2.c. Andere belastingen	763.546.970	779.992.857	788.835.380	795.525.234	798.524.897	804.754.487
II.A.2.d. Boetes	7.939.504	10.364.599	10.338.313	10.396.584	10.385.960	10.448.928
<b>II.A.3. Werkingssubsidies</b>	<b>3.648.930.586</b>	<b>3.701.240.264</b>	<b>3.793.703.106</b>	<b>3.881.998.198</b>	<b>3.981.295.614</b>	<b>4.089.123.798</b>
II.A.3.a. Algemene werkingssubsidies	2.332.272.964	2.402.842.791	2.478.171.021	2.558.104.396	2.640.477.565	2.727.233.409
II.A.3.a.1. Gemeente- of provinciefonds	2.159.708.454	2.233.442.796	2.309.596.583	2.389.438.730	2.471.778.516	2.556.903.135
II.A.3.a.3. Overige algemene werkingssubsidies	172.564.510	169.399.995	168.574.438	168.665.666	168.699.049	170.330.274
II.A.3.b. Specifieke werkingssubsidies	1.316.657.622	1.298.397.474	1.315.532.085	1.323.893.802	1.340.818.048	1.361.890.389
<b>II.A.5. Andere operationele ontvangsten</b>	<b>146.700.173</b>	<b>125.402.440</b>	<b>129.796.332</b>	<b>135.413.080</b>	<b>143.013.636</b>	<b>148.157.344</b>
<b>II.B Financiële ontvangsten</b>	<b>415.535.509</b>	<b>390.680.030</b>	<b>386.166.708</b>	<b>384.172.998</b>	<b>384.236.200</b>	<b>382.561.957</b>
II.B.1. Opbrengsten uit financiële vaste activa	353.713.774	342.843.698	340.817.171	340.355.792	341.408.706	340.273.481
II.B.2. Opbrengsten uit vlottende activa	31.752.093	30.131.987	28.018.478	27.025.065	26.385.254	26.190.739
II.B.3. Andere financiële opbrengsten	30.069.641	17.704.344	17.331.059	16.792.141	16.442.241	16.097.737
<b>III. Exploitatiesaldo</b>	<b>773.701.972</b>	<b>772.543.504</b>	<b>818.525.860</b>	<b>875.118.299</b>	<b>920.991.106</b>	<b>985.000.879</b>

# Algemeen overzicht Gem of Prov

	2014	2015	2016	2017	2018	2019
<b>Investerings</b>						
<b>I. Investeringsuitgaven</b>	<b>2.867.323.566</b>	<b>2.217.315.840</b>	<b>1.960.726.265</b>	<b>1.568.625.371</b>	<b>1.238.467.003</b>	<b>928.561.813</b>
<b>I.A Investerings in financiële vaste activa</b>	<b>18.227.343</b>	<b>6.905.286</b>	<b>4.311.430</b>	<b>24.523.589</b>	<b>3.794.597</b>	<b>7.330.937</b>
I.A.1. Extern verzelfstandigde agentschappen	14.853.508	5.223.284	1.642.653	22.048.739	1.831.770	6.200.993
I.A.2. IGS en soortgelijke entiteiten	2.363.245	606.791	606.856	536.891	536.962	477.516
I.A.3. Publiek-private samenwerkingsverbanden	7.601	7.413	1.007.452	1.007.493	507.536	7.581
I.A.4. OCMW-verenigingen	0	0	0	0	0	0
I.A.5. Andere financiële vaste activa	1.002.989	1.067.798	1.054.469	930.466	918.329	644.847
<b>I.B Investerings in materiële vaste activa</b>	<b>2.384.480.985</b>	<b>1.889.947.734</b>	<b>1.673.480.669</b>	<b>1.331.751.601</b>	<b>1.067.754.980</b>	<b>764.423.081</b>
<b>I.B.1. Gemeenschapsgoederen en bedrijfsmatige MVA</b>	<b>2.334.574.313</b>	<b>1.867.859.214</b>	<b>1.652.343.052</b>	<b>1.323.050.717</b>	<b>1.063.552.985</b>	<b>762.349.733</b>
I.B.1.A. Terreinen en gebouwen	1.035.998.080	755.640.847	678.313.410	512.815.322	312.397.068	228.969.062
I.B.1.B. Wegen en overige infrastructuur	1.022.023.651	934.574.605	823.165.920	671.309.735	627.981.836	431.244.736
I.B.1.C. Roerende goederen	241.952.800	143.193.900	125.871.266	110.634.020	100.562.086	88.311.217
I.B.1.D. Vaste activa in leasing en soortgelijke	909.613	5.645.789	75.512	67.712	67.712	67.712
I.B.1.E. Erfgoed	33.690.169	28.804.073	24.916.945	28.223.929	22.544.284	13.757.006
<b>I.B.2. Overige materiële vaste activa</b>	<b>49.906.673</b>	<b>22.088.521</b>	<b>21.137.617</b>	<b>8.700.884</b>	<b>4.201.995</b>	<b>2.073.348</b>
I.B.2.A. Terreinen en gebouwen	47.857.481	20.336.104	19.556.933	6.851.267	2.663.840	693.281
I.B.2.B. Roerende goederen	2.049.192	1.752.417	1.580.684	1.849.617	1.538.155	1.380.067
I.B.3. Vooruitbetalingen op investeringen in MVA	0	0	0	0	0	0
<b>I.C. Investerings in immateriële vaste activa</b>	<b>104.039.371</b>	<b>52.560.593</b>	<b>42.482.985</b>	<b>31.931.111</b>	<b>26.284.449</b>	<b>21.280.894</b>
<b>I.D. Toegestane investeringssubsidies</b>	<b>360.575.867</b>	<b>267.902.227</b>	<b>240.451.180</b>	<b>180.419.070</b>	<b>140.632.978</b>	<b>135.526.901</b>
<b>II. Investeringsontvangsten</b>	<b>887.608.226</b>	<b>682.758.419</b>	<b>693.107.936</b>	<b>515.367.883</b>	<b>396.727.403</b>	<b>340.726.185</b>
<b>II.A. Verkoop van financiële vaste activa</b>	<b>26.980.903</b>	<b>33.043.278</b>	<b>63.104.395</b>	<b>5.738.350</b>	<b>7.135.577</b>	<b>2.689.079</b>
II.A.1. Extern verzelfstandigde agentschappen	26.064.067	4.851.517	3.564.067	4.927.067	4.798.382	2.148.726
II.A.2. IGS en soortgelijke entiteiten	668.621	6.235.947	43.149	43.149	1.590.000	43.149
II.A.3. Publiek-private samenwerkingsverbanden	56	0	0	0	0	0
II.A.4. OCMW-verenigingen	0	0	0	0	0	0
II.A.5. Andere financieel vaste activa	248.159	21.955.814	59.497.179	768.134	747.195	497.204
<b>II.B. Verkoop van materiële vaste activa</b>	<b>377.615.052</b>	<b>245.302.900</b>	<b>236.184.787</b>	<b>168.233.944</b>	<b>128.635.370</b>	<b>105.983.131</b>
<b>II.B.1. Gemeenschapsgoederen en bedrijfsmatige MVA</b>	<b>281.838.005</b>	<b>182.765.730</b>	<b>156.083.965</b>	<b>126.343.768</b>	<b>104.679.118</b>	<b>92.950.631</b>
II.B.1.A. Terreinen en gebouwen	268.470.181	175.444.436	146.588.310	121.613.919	103.287.870	91.777.158
II.B.1.B. Wegen en overige infrastructuur	12.793.989	6.388.869	9.304.505	4.631.136	1.358.685	839.973
II.B.1.C. Roerende goederen	479.836	266.426	68.150	91.713	32.563	333.500
II.B.1.D. Vaste activa in leasing en soortgelijke	0	0	0	0	0	0
II.B.1.E. Erfgoed	94.000	666.000	123.000	7.000	0	0
<b>II.B.2. Overige materiële vaste activa</b>	<b>95.042.047</b>	<b>62.037.170</b>	<b>79.600.822</b>	<b>41.390.176</b>	<b>23.456.252</b>	<b>12.532.500</b>
II.B.2.A. Terreinen en gebouwen	95.013.547	62.034.170	79.600.822	41.390.176	23.456.252	12.532.500
II.B.2.B. Roerende goederen	28.500	3.000	0	0	0	0
<b>II.B.3. Ontvangen vooruitbetalingen op verkoop MVA</b>	<b>735.000</b>	<b>500.000</b>	<b>500.000</b>	<b>500.000</b>	<b>500.000</b>	<b>500.000</b>
<b>II.C. Verkoop van immateriële vaste activa</b>	<b>15.000</b>	<b>0</b>	<b>0</b>	<b>15.000</b>	<b>0</b>	<b>0</b>
<b>II.D. Investeringsubsidies en -schenkingen</b>	<b>482.997.270</b>	<b>404.412.240</b>	<b>393.818.754</b>	<b>341.380.589</b>	<b>260.956.456</b>	<b>232.053.975</b>
<b>III. Saldo investeringsverrichtingen</b>	<b>-1.979.715.341</b>	<b>-1.534.557.422</b>	<b>-1.267.618.329</b>	<b>-1.053.257.488</b>	<b>-841.739.600</b>	<b>-587.835.628</b>

## Algemeen overzicht Gem of Prov

	2014	2015	2016	2017	2018	2019
<b>Andere verrichtingen</b>						
<b>I. Uitgaven</b>	<b>816.234.827</b>	<b>780.617.519</b>	<b>807.319.719</b>	<b>824.488.726</b>	<b>858.960.355</b>	<b>837.317.429</b>
I.A. Aflossing financiële schulden	718.506.855	753.673.340	779.600.115	818.370.796	853.645.534	832.230.901
I.A.1. Periodieke aflossing financiële schulden	717.133.855	752.621.805	778.342.119	818.125.796	847.187.534	816.132.112
I.A.2. Niet-periodieke aflossing financiële schulden	1.373.000	1.051.535	1.257.996	245.000	6.458.000	16.098.789
I.B. Toegestane leningen	97.281.105	25.747.312	26.522.737	4.921.063	4.117.954	3.889.661
I.C. Overige transacties	446.867	1.196.867	1.196.867	1.196.867	1.196.867	1.196.867
I.C.1. Terugbetaling van borgtochten ontvangen in contanten	182.800	932.800	932.800	932.800	932.800	932.800
I.C.2. Vorderingen op LT die binnen het jaar vervallen	264.067	264.067	264.067	264.067	264.067	264.067
<b>II. Ontvangsten</b>	<b>1.220.940.816</b>	<b>1.245.360.063</b>	<b>1.091.395.411</b>	<b>952.204.971</b>	<b>799.934.375</b>	<b>522.710.098</b>
II.A. Op te nemen leningen en leasings	1.170.214.983	1.194.611.972	1.043.589.051	909.338.094	759.937.775	483.122.138
II.B. Terugvordering van aflossingen	43.043.251	42.206.312	43.555.285	42.066.229	39.275.634	38.915.263
II.B.1. Periodieke terugvorderingen	39.372.502	41.032.251	38.530.710	37.833.536	36.569.090	36.217.410
II.B.2. Niet-periodieke terugvorderingen	3.670.749	1.174.061	5.024.575	4.232.693	2.706.544	2.697.853
II.C. Overige transacties	7.682.583	8.541.779	4.251.075	800.649	720.966	672.697
II.C.1. Borgtochten ontvangen in contanten	257.500	257.500	257.500	257.500	181.000	181.000
II.C.2. Vorderingen op LT die binnen het jaar vervallen	5.137.083	8.284.279	3.993.575	543.149	539.966	491.697
II.C.3. Schenkingen	2.288.000	0	0	0	0	0
<b>III. Saldo andere verrichtingen</b>	<b>404.705.989</b>	<b>464.742.544</b>	<b>284.075.692</b>	<b>127.716.245</b>	<b>-59.025.980</b>	<b>-314.607.331</b>
<b>Totaal ontvangsten</b>	<b>11.807.777.051</b>	<b>11.646.357.275</b>	<b>11.698.702.239</b>	<b>11.576.899.325</b>	<b>11.514.241.058</b>	<b>11.400.343.558</b>
<b>Totaal uitgaven</b>	<b>12.609.084.431</b>	<b>11.943.628.649</b>	<b>11.863.719.016</b>	<b>11.627.322.269</b>	<b>11.494.015.532</b>	<b>11.317.785.637</b>
<b>Budgettair resultaat boekjaar</b>	<b>-801.307.379</b>	<b>-297.271.374</b>	<b>-165.016.777</b>	<b>-50.422.943</b>	<b>20.225.526</b>	<b>82.557.920</b>
<b>Autofinancieringsmarge</b>	<b>96.594.085</b>	<b>61.938.622</b>	<b>82.029.288</b>	<b>97.575.618</b>	<b>111.728.488</b>	<b>205.720.099</b>
<b>A. Financieel draagvlak</b>	<b>1.050.089.819</b>	<b>1.066.630.531</b>	<b>1.128.064.428</b>	<b>1.193.917.743</b>	<b>1.244.130.711</b>	<b>1.303.031.582</b>
A.1. Exploitatieontvangsten	9.699.228.010	9.718.238.794	9.914.198.892	10.109.326.471	10.317.579.280	10.536.907.274
A.2. Exploitatie-uitgaven min financiële uitgaven	8.649.138.190	8.651.608.263	8.786.134.464	8.915.408.729	9.073.448.569	9.233.875.693
A.2.a. Exploitatie-uitgaven	8.925.526.038	8.945.695.290	9.095.673.032	9.234.208.172	9.396.588.173	9.551.906.395
A.2.b. Netto financiële uitgaven	276.387.847	294.087.027	309.538.568	318.799.443	323.139.605	318.030.703
<b>B. Netto periodieke leningslasten</b>	<b>953.495.734</b>	<b>1.004.691.908</b>	<b>1.046.035.141</b>	<b>1.096.342.125</b>	<b>1.132.402.223</b>	<b>1.097.311.483</b>
B.1. Netto periodieke aflossingen	677.107.887	710.604.881	736.496.573	777.542.682	809.262.619	779.280.781
B.2. Netto financiële uitgaven	276.387.847	294.087.027	309.538.568	318.799.443	323.139.605	318.030.703

## Exploitatie

<b>Exploitatie</b>	<b>2014</b>	<b>2015</b>	<b>2016</b>	<b>2017</b>	<b>2018</b>	<b>2019</b>	
Uitgaven	8.925.526.038	8.945.695.290	9.095.673.032	9.234.208.172	9.396.588.173	9.551.906.395	
Ontvangsten	9.699.228.010	9.718.238.794	9.914.198.892	10.109.326.471	10.317.579.280	10.536.907.274	
Saldo	773.701.972	772.543.504	818.525.860	875.118.299	920.991.106	985.000.879	

<b>Evoluties</b>							<b>Gemid.</b>
Uitgaven	100%	100%	102%	103%	105%	107%	1,37%
Ontvangsten	100%	100%	102%	104%	106%	109%	1,67%
Saldo	100%	100%	106%	113%	119%	127%	4,95%

<b>Exploitatie-uitgaven</b>	<b>2014</b>	<b>2015</b>	<b>2016</b>	<b>2017</b>	<b>2018</b>	<b>2019</b>	
Bezoldigingen, sociale lasten en pensioenen	3.902.507.977	3.945.838.890	4.008.669.813	4.063.131.503	4.134.203.969	4.205.469.643	
Toegestane werkingssubsidies	2.811.858.485	2.846.116.526	2.913.141.623	2.974.152.045	3.036.290.759	3.103.355.555	

<b>Evoluties</b>							<b>Gemid.</b>
Bezoldigingen, sociale lasten en pensioenen	100%	101%	103%	104%	106%	108%	1,51%
Toegestane werkingssubsidies	100%	101%	104%	106%	108%	110%	1,99%

<b>Toegestane werkingssubsidies</b>	<b>2014</b>	<b>2015</b>	<b>2016</b>	<b>2017</b>	<b>2018</b>	<b>2019</b>	
Politiezone	891.906.582	930.407.623	961.940.370	988.234.412	1.015.759.436	1.046.029.371	
OCMW	862.435.441	880.297.474	901.201.842	918.841.860	935.987.949	958.014.031	
Erediensten	45.047.003	53.112.710	53.397.459	53.794.789	53.990.710	53.917.070	
Overige	1.012.469.458	982.298.719	996.601.952	1.013.280.984	1.030.552.664	1.045.395.082	

<b>Evoluties</b>							<b>Gemid.</b>
Politiezone	100%	104%	108%	111%	114%	117%	3,24%
OCMW	100%	102%	104%	107%	109%	111%	2,12%
Erediensten	100%	118%	119%	119%	120%	120%	3,66%
Overige	100%	97%	98%	100%	102%	103%	0,64%

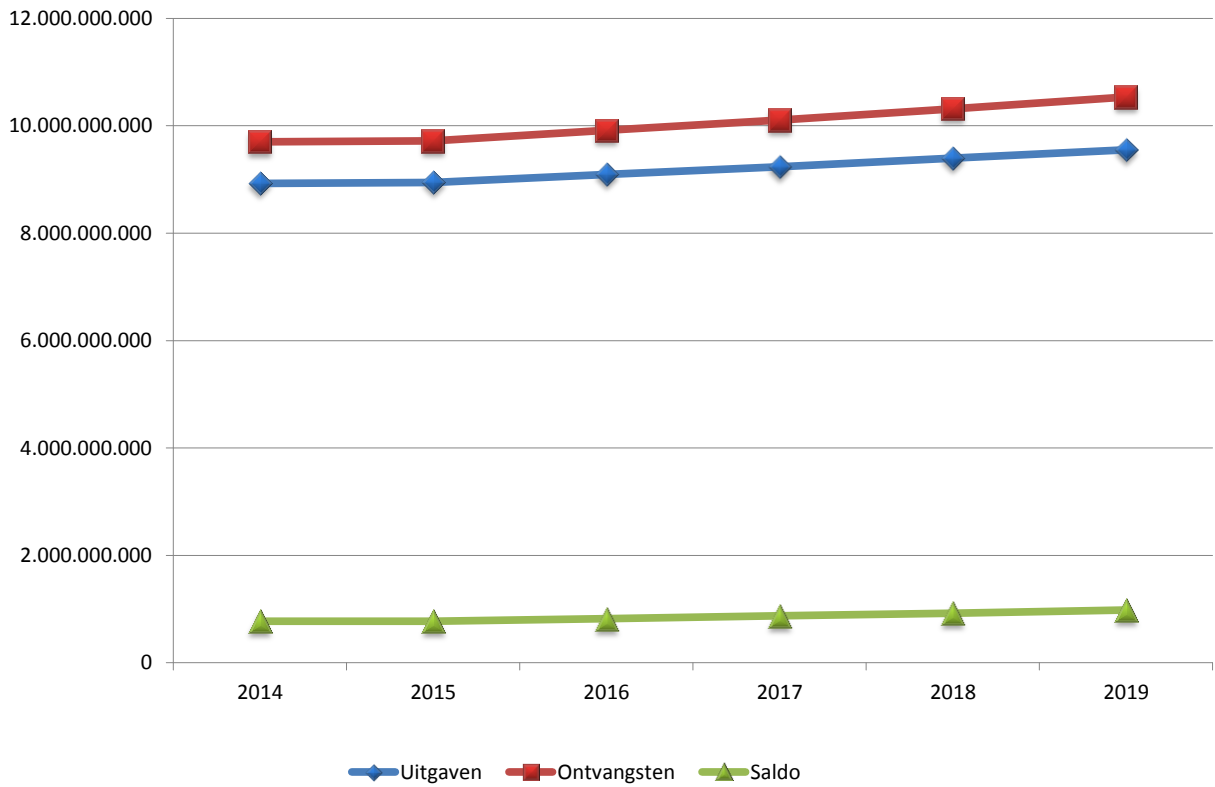
## Exploitatie

<b>Exploitatieontvangsten</b>	<b>2014</b>	<b>2015</b>	<b>2016</b>	<b>2017</b>	<b>2018</b>	<b>2019</b>	
Fiscale ontvangsten	4.859.632.232	4.865.721.053	4.964.258.888	5.061.609.620	5.158.524.216	5.260.894.317	
Werkingsubsidies	3.648.930.586	3.701.240.264	3.793.703.106	3.881.998.198	3.981.295.614	4.089.123.798	
<b>Evoluties</b>							<b>Gemid.</b>
Fiscale ontvangsten	100%	100%	102%	104%	106%	108%	1,60%
Werkingsubsidies	100%	101%	104%	106%	109%	112%	2,30%

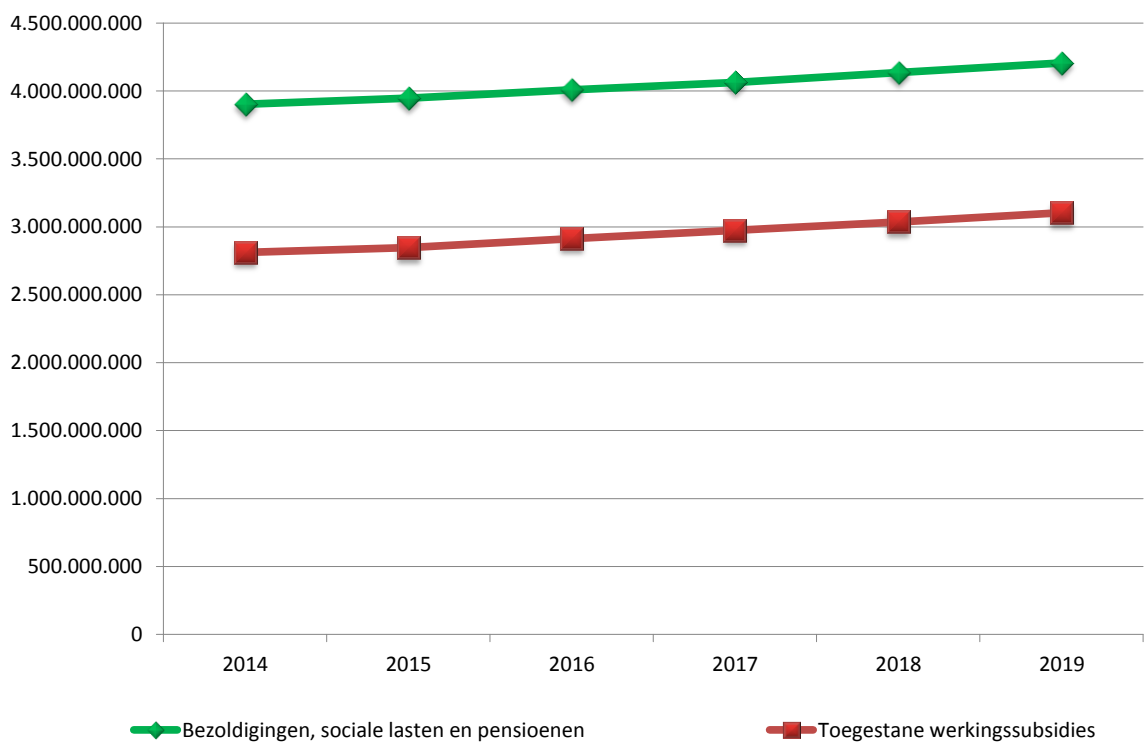
<b>Fiscale ontvangsten</b>	<b>2014</b>	<b>2015</b>	<b>2016</b>	<b>2017</b>	<b>2018</b>	<b>2019</b>	
OOV	2.153.562.087	2.201.072.286	2.251.810.898	2.303.431.757	2.357.026.487	2.411.847.126	
APB	1.934.583.671	1.874.291.311	1.913.274.296	1.952.256.045	1.992.586.872	2.033.843.776	
Andere belastingen	763.546.970	779.992.857	788.835.380	795.525.234	798.524.897	804.754.487	
<b>Evoluties</b>							<b>Gemid.</b>
OOV	100%	102%	105%	107%	109%	112%	2,29%
APB	100%	97%	99%	101%	103%	105%	1,01%
Andere belastingen	100%	102%	103%	104%	105%	105%	1,06%

<b>Ontvangen werkingsubsidies</b>	<b>2014</b>	<b>2015</b>	<b>2016</b>	<b>2017</b>	<b>2018</b>	<b>2019</b>	
Gemeentefonds	2.159.708.454	2.233.442.796	2.309.596.583	2.389.438.730	2.471.778.516	2.556.903.135	
Overige werkingsubsidies	1.489.222.131	1.467.797.468	1.484.106.523	1.492.559.468	1.509.517.098	1.532.220.663	
<b>Evoluties</b>							<b>Gemid.</b>
Gemeentefonds	100%	103%	107%	111%	114%	118%	3,43%
Overige werkingsubsidies	100%	99%	100%	100%	101%	103%	0,57%

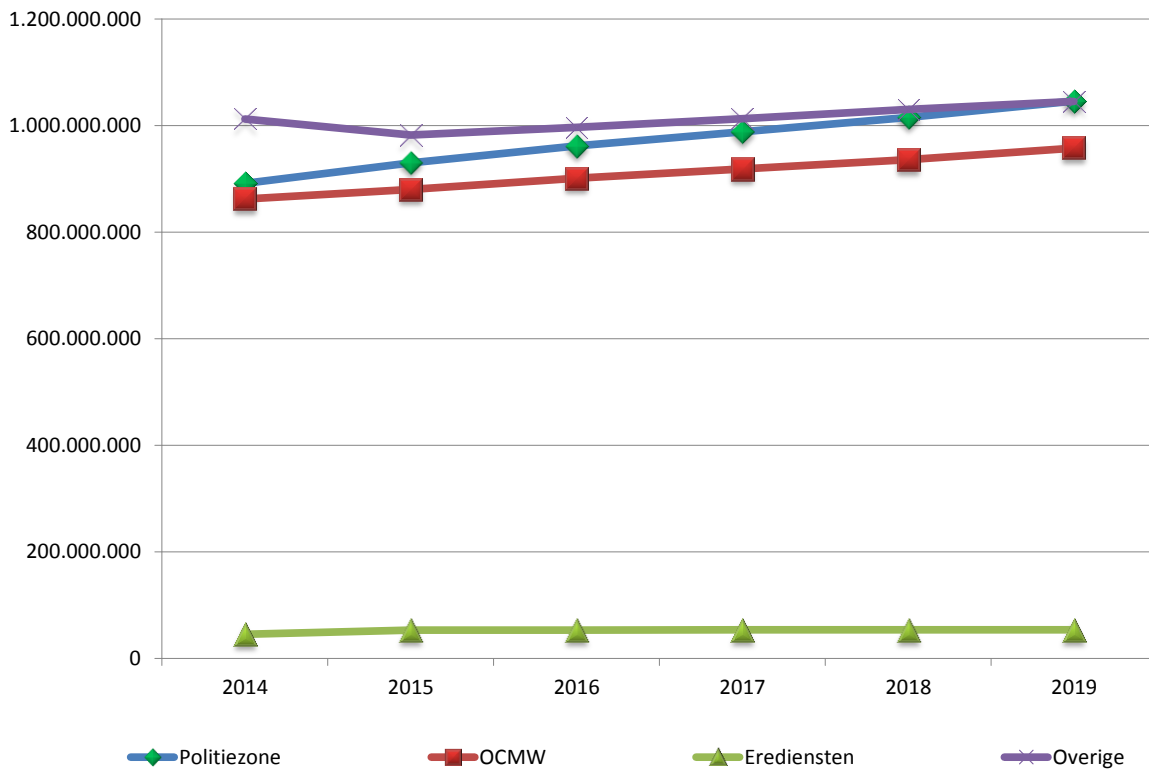
## Exploitatie



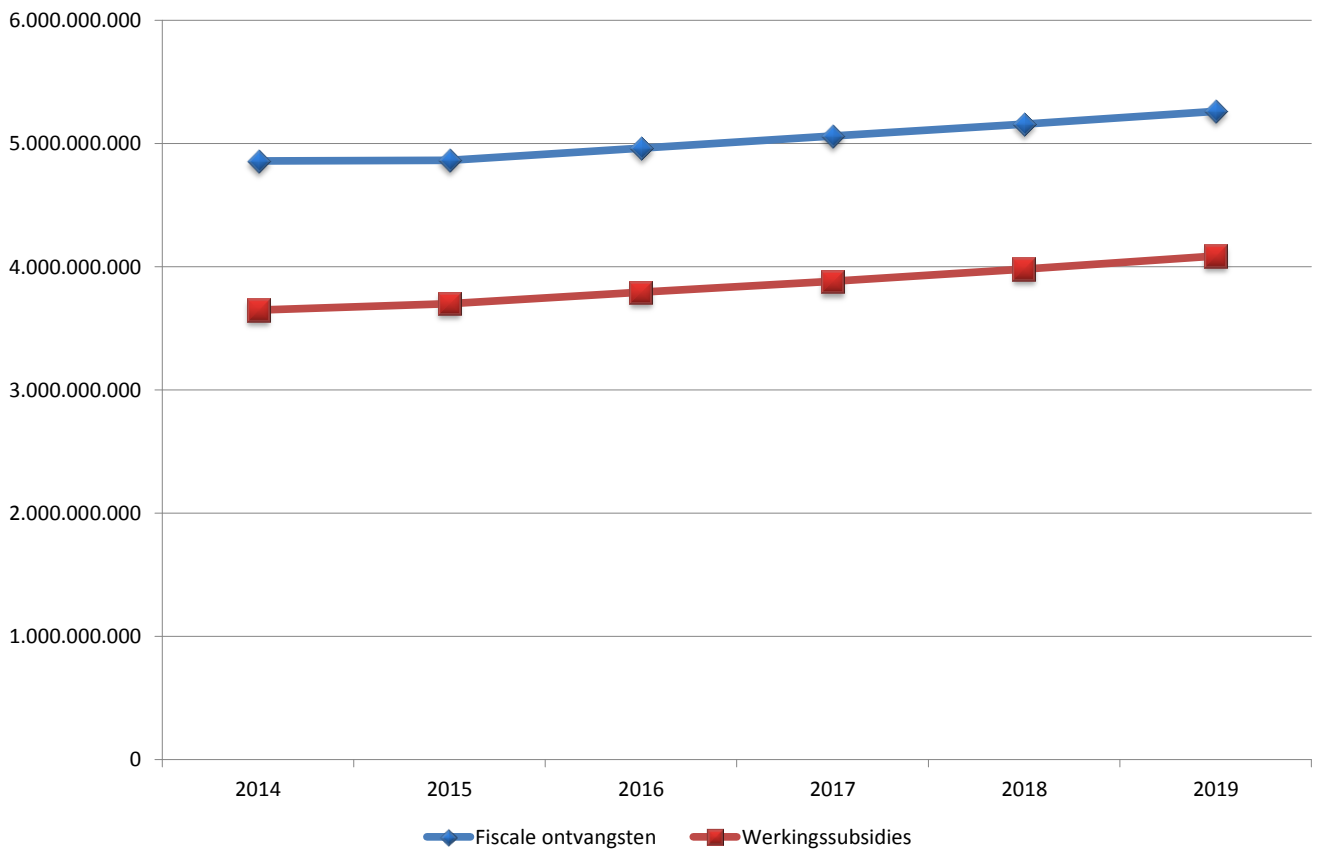
## Exploitatie-uitgaven



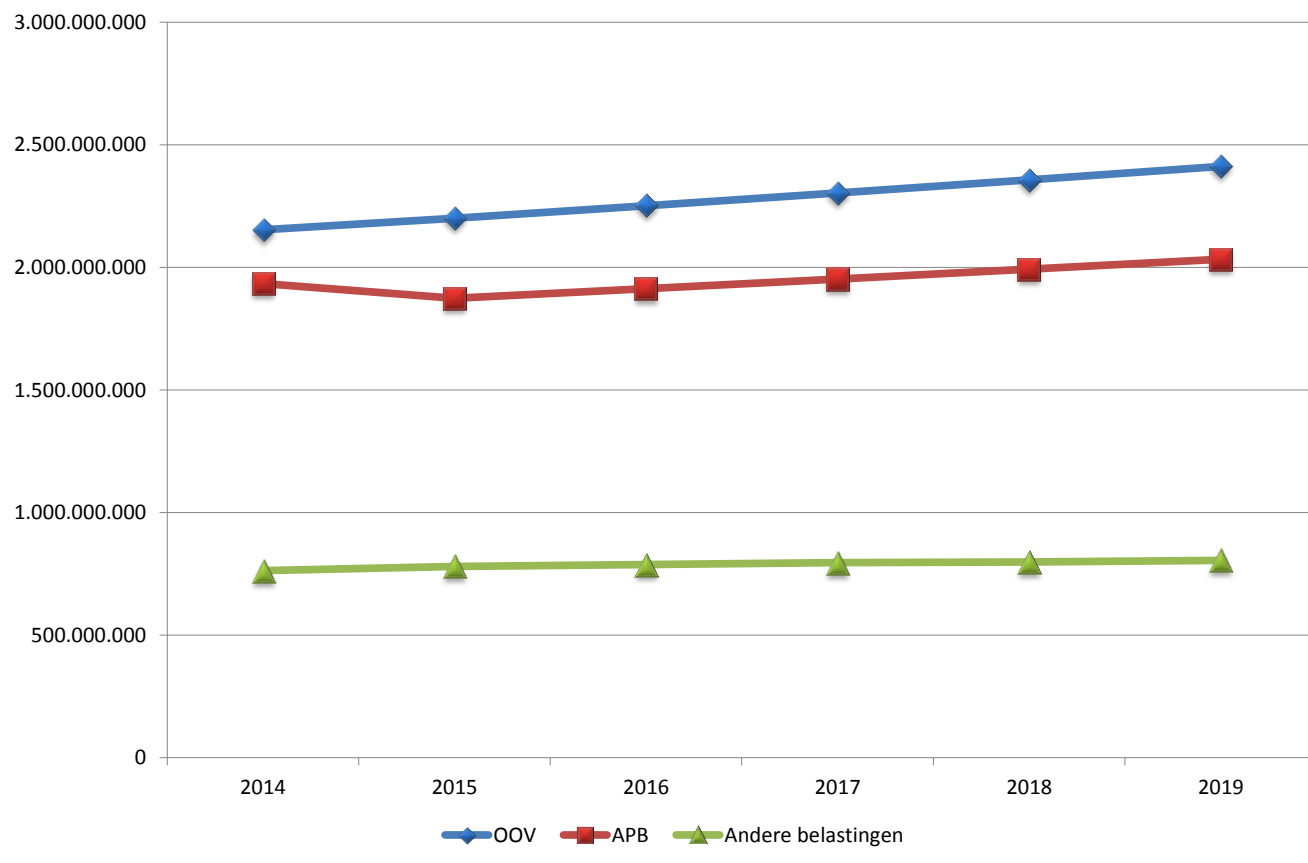
### Toegestane werkingssubsidies



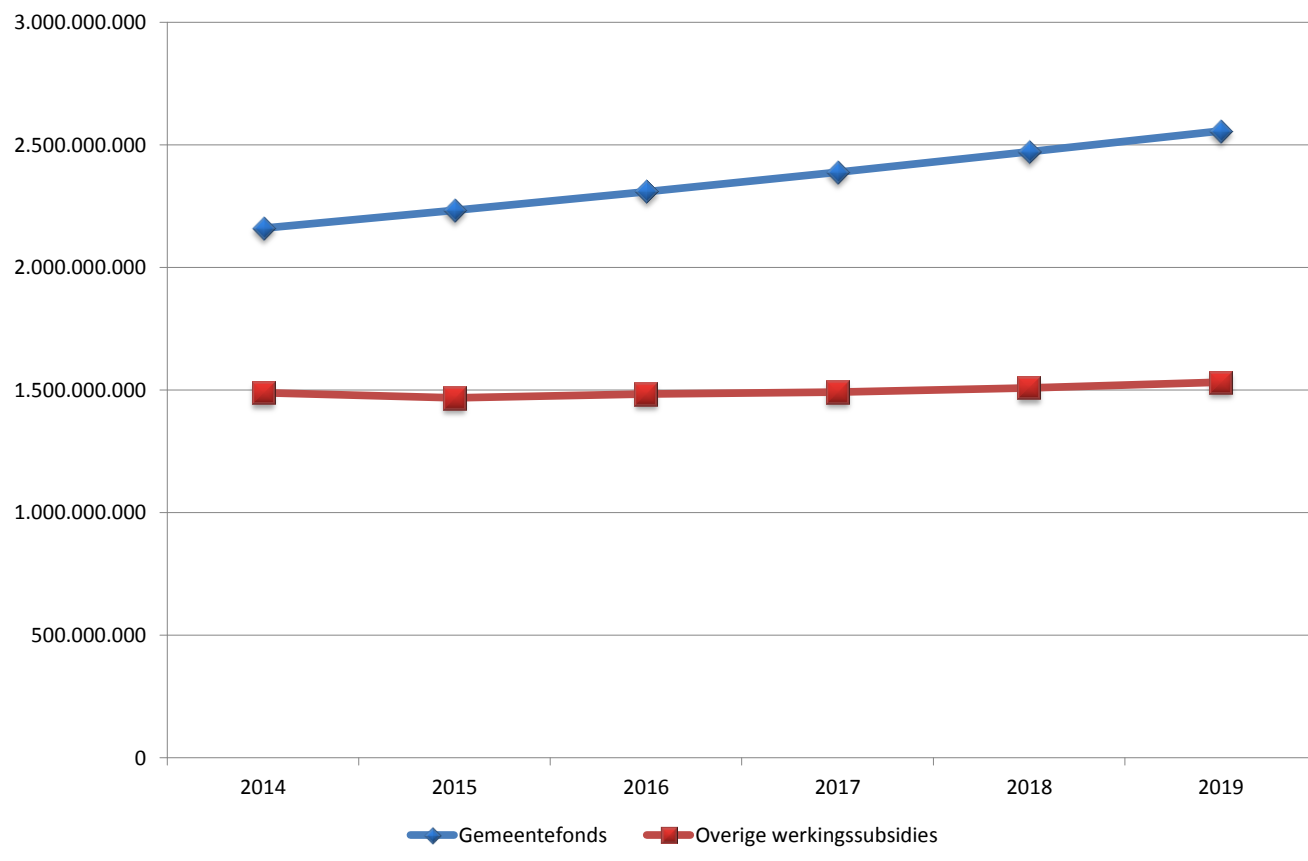
### Exploitatie-ontvangsten



## Fiscale ontvangsten



## Ontvangen werkingsubsidies





## Investeringen

Investeringen	2014	2015	2016	2017	2018	2019
Uitgaven	2.867.323.566	2.217.315.840	1.960.726.265	1.568.625.371	1.238.467.003	928.561.813
Ontvangsten	887.608.226	682.758.419	693.107.936	515.367.883	396.727.403	340.726.185
Saldo	-1.979.715.341	-1.534.557.422	-1.267.618.329	-1.053.257.488	-841.739.600	-587.835.628

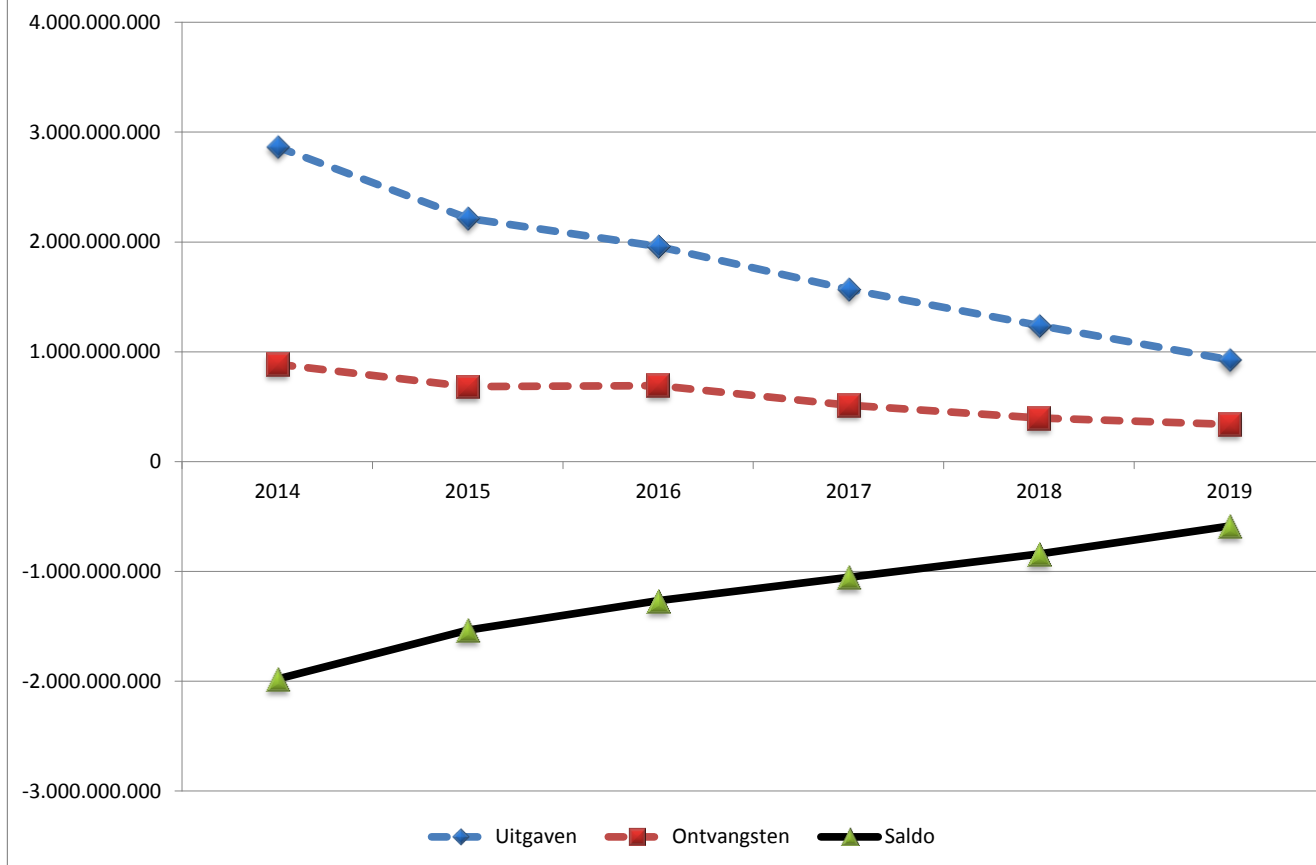
Evoluties							Gemid.
Uitgaven	100%	77%	68%	55%	43%	32%	-20,19%
Ontvangsten	100%	77%	78%	58%	45%	38%	-17,43%

Invsteringsuitgaven	2014	2015	2016	2017	2018	2019
Financiële vaste activa (FVA)	18.227.343	6.905.286	4.311.430	24.523.589	3.794.597	7.330.937
Materiële vaste activa (MVA)	2.384.480.985	1.889.947.734	1.673.480.669	1.331.751.601	1.067.754.980	764.423.081
Immateriële vaste activa (IVA)	104.039.371	52.560.593	42.482.985	31.931.111	26.284.449	21.280.894
Toegestane investeringssubsidies	360.575.867	267.902.227	240.451.180	180.419.070	140.632.978	135.526.901

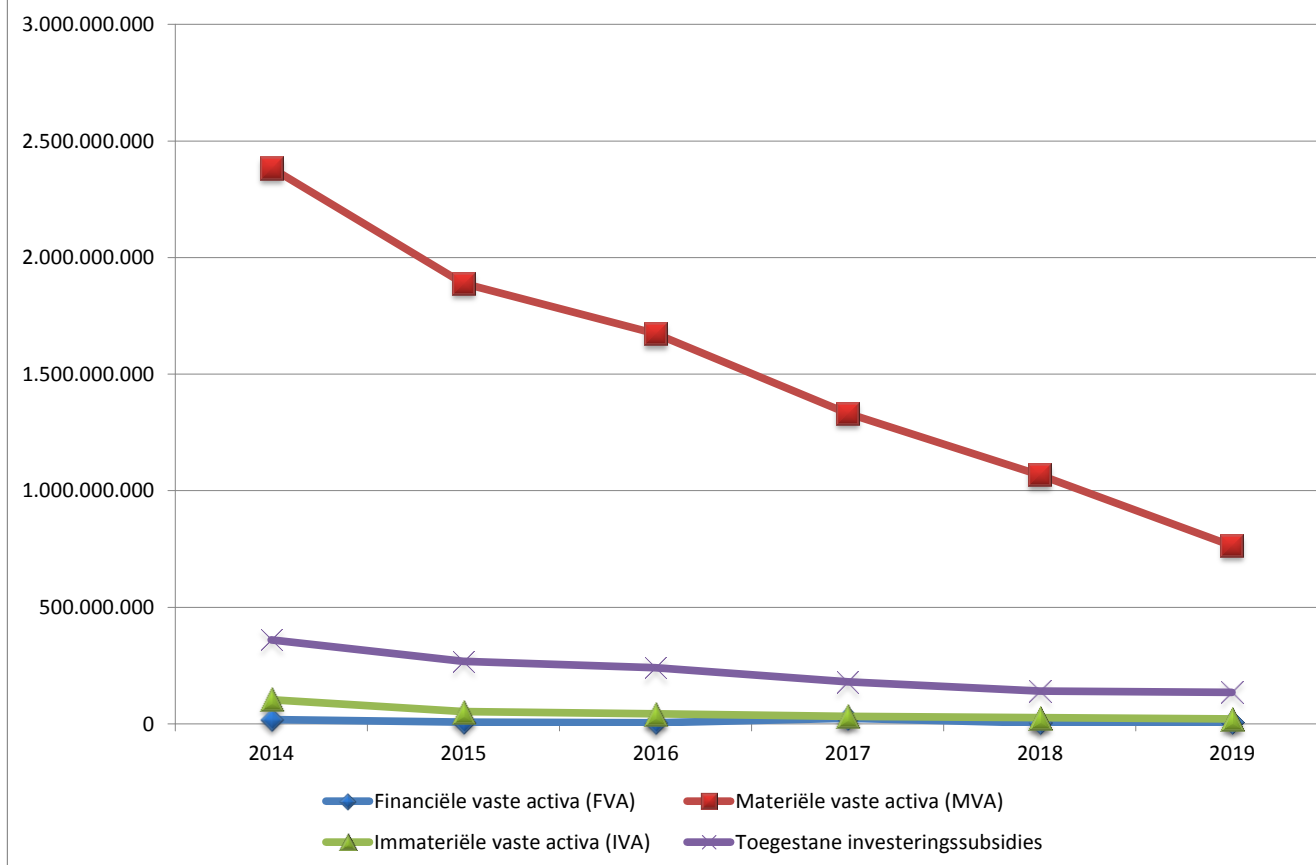
Evoluties							Gemid.
Financiële vaste activa (FVA)	100%	38%	24%	135%	21%	40%	-16,65%
Materiële vaste activa (MVA)	100%	79%	70%	56%	45%	32%	-20,35%
Immateriële vaste activa (IVA)	100%	51%	41%	31%	25%	20%	-27,20%
Toegestane investeringssubsidies	100%	74%	67%	50%	39%	38%	-17,77%

Investeringsontvangsten	2014	2015	2016	2017	2018	2019
Verkoop FVA	26.980.903	33.043.278	63.104.395	5.738.350	7.135.577	2.689.079
Verkoop MVA	377.615.052	245.302.900	236.184.787	168.233.944	128.635.370	105.983.131
Investeringsubsidies en -schenkingen	482.997.270	404.412.240	393.818.754	341.380.589	260.956.456	232.053.975

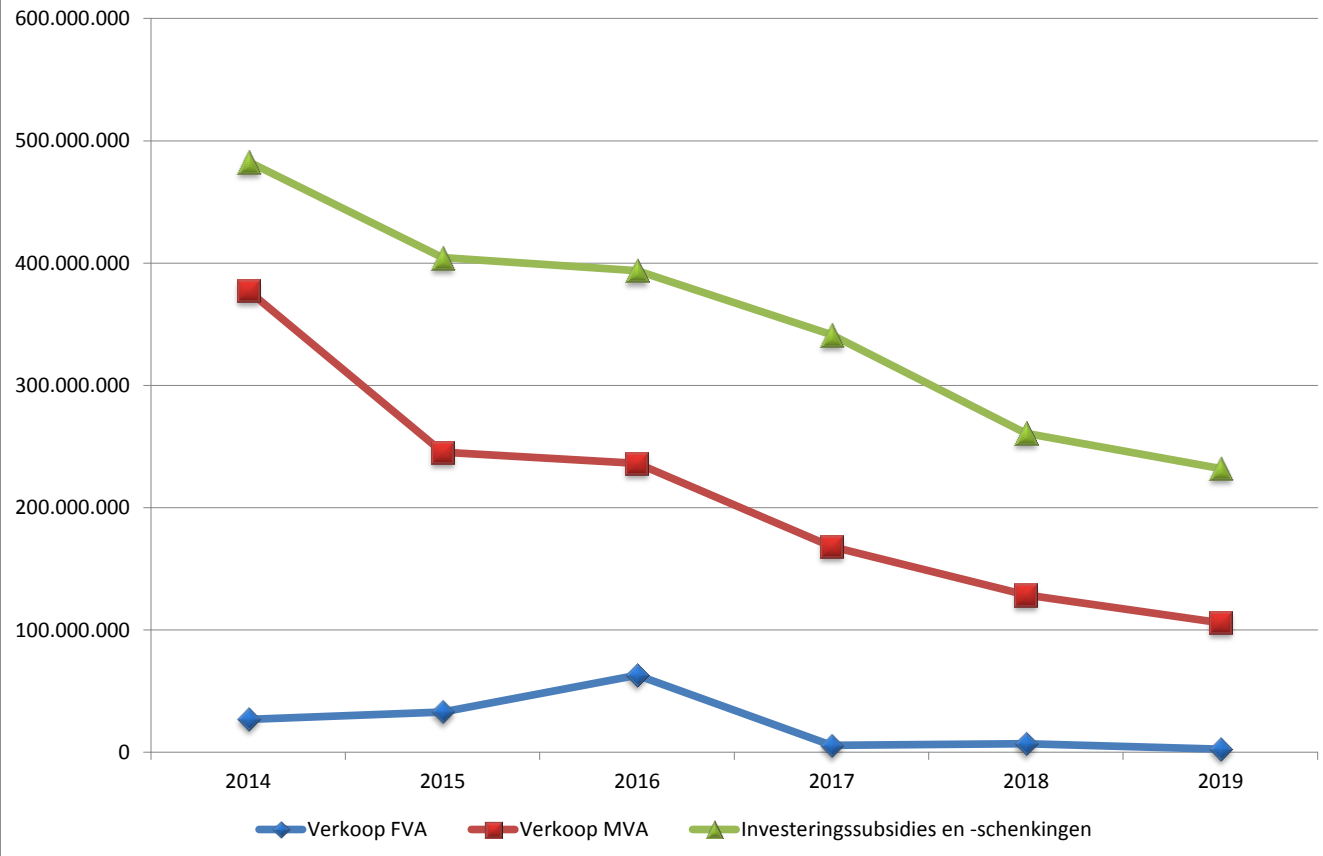
## Investerings



## Investeringsuitgaven



## Investeringsontvangsten



## Resultaten

### Budgettair resultaat boekjaar

	2014	2015	2016	2017	2018	2019
Exploitatiesaldo	773.701.972	772.543.504	818.525.860	875.118.299	920.991.106	985.000.879
Saldo investeringsverrichtingen	-1.979.715.341	-1.534.557.422	-1.267.618.329	-1.053.257.488	-841.739.600	-587.835.628
Saldo andere verrichtingen	404.705.989	464.742.544	284.075.692	127.716.245	-59.025.980	-314.607.331
Budgettair resultaat boekjaar	-801.307.379	-297.271.374	-165.016.777	-50.422.943	20.225.526	82.557.920

### Evoluties

Exploitatiesaldo	100%	100%	106%	113%	119%	127%
Saldo investeringsverrichtingen	100%	78%	64%	53%	43%	30%
Saldo andere verrichtingen	100%	115%	70%	32%	-15%	-78%
Budgettair resultaat boekjaar	100%	37%	21%	6%	-3%	-10%

### Autofinancieringsmarge

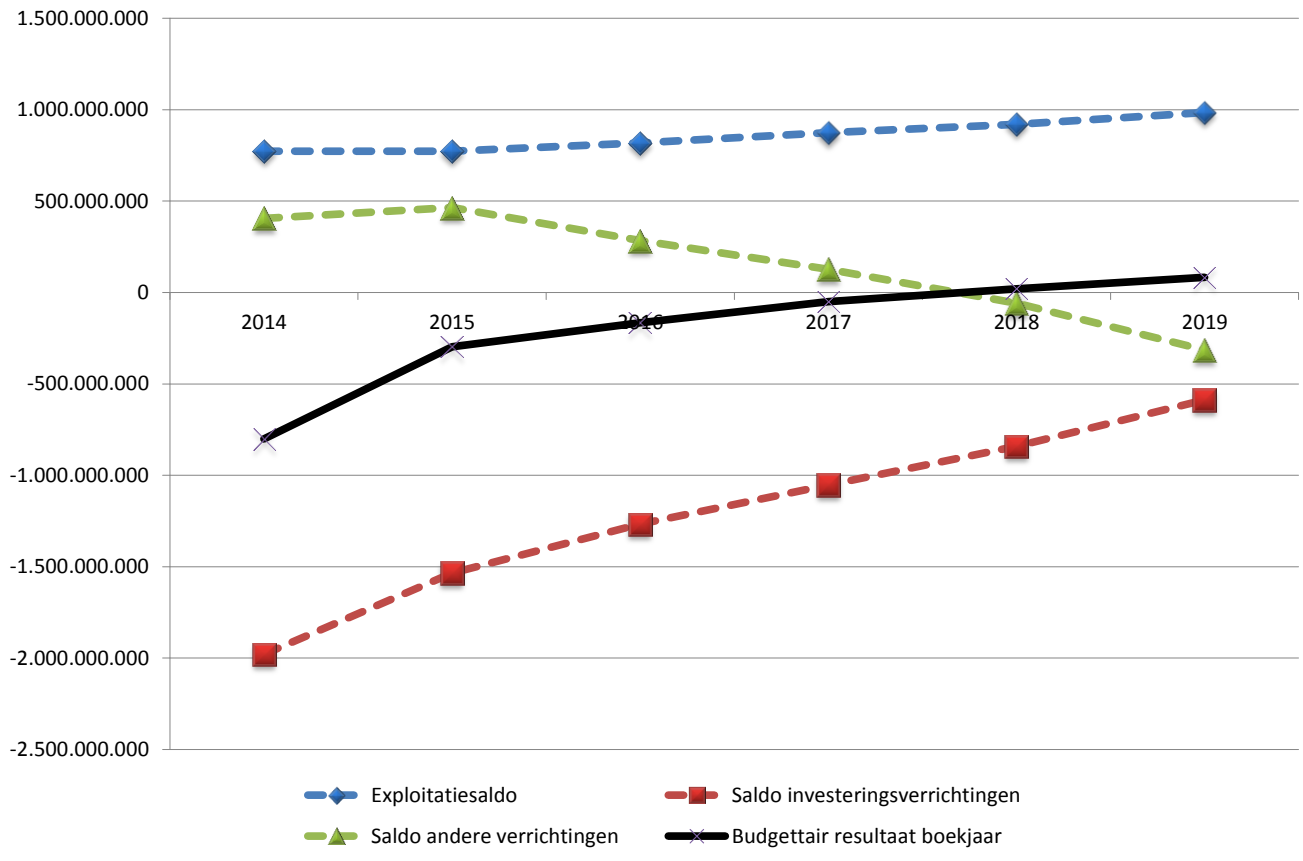
	2014	2015	2016	2017	2018	2019
Financieel draagvlak	1.050.089.819	1.066.630.531	1.128.064.428	1.193.917.743	1.244.130.711	1.303.031.582
Netto periodieke leningslasten	953.495.734	1.004.691.908	1.046.035.141	1.096.342.125	1.132.402.223	1.097.311.483
Autofinancieringsmarge	96.594.085	61.938.622	82.029.288	97.575.618	111.728.488	205.720.099

### Evoluties

Financieel draagvlak	100%	102%	107%	114%	118%	124%
Netto periodieke leningslasten	100%	105%	110%	115%	119%	115%
Autofinancieringsmarge	100%	64%	85%	101%	116%	213%

&[

### Budgettair resultaat boekjaar



### Autofinancieringsmarge

